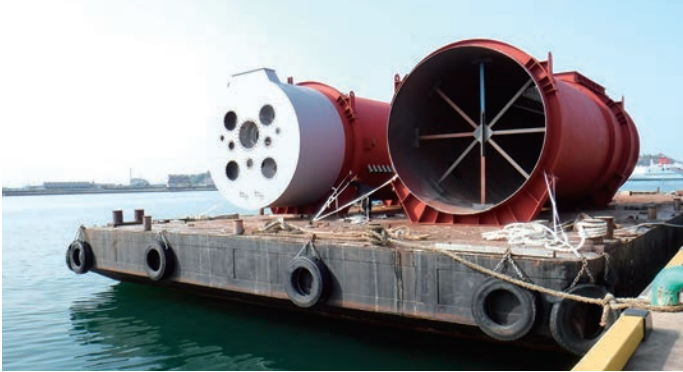


Sky Techno Engineering Co., Ltd.



Providing comprehensive solutions from large-scale tower and tank fabrication to transportation and installation through plant engineering

Assumed field Foundation Manufacturing(Fixed & Floating) > Large Plate Rolling



Maintaining a nationwide network of partner companies, Sky Techno Engi handles marine and land transportation processes through to on-site installation

Sky Techno Engi is a plant engineering company that provides integrated services ranging from tower and tank fabrication, transportation, and installation to plant design, manufacturing, installation, and inspection. Its strength lies in its capabilities in handling everything from the fabrication of large-scale towers and tanks to marine and land transportation and on-site installation work. The company has extensive experience with towers and tanks for environmental equipment, including flue gas desulfurization (FGD) systems, flue gas denitrification (FGD) systems, and final disposal sites for PCB waste. **For tank manufacturing, Sky Techno Engi performs integrated installation of peripheral equipment, piping, painting, pickling, and insulating sheet metal work. It also maintains manufacturing technologies supporting**

complex processing and bending of thick steel plates with thicknesses up to 40 mm. Another of its strengths lies in its extensive delivery track record stretching from Hokkaidō all the way to Kyūshū, achieved through collaboration with partner companies in Akita, Chiba, Saitama, Fukuoka, Okayama Prefectures, and other locations. The company offers one-stop service from design to on-site installation. **For offshore wind power generation projects, Sky Techno Engi can handle the fabrication of base structures and provide on-site construction support.** In addition, installation of two parent-child gantry cranes, 10-t and 5-t, at the wharf is scheduled for May 2026, bringing expectations of further improvements in its marine transport efficiency.

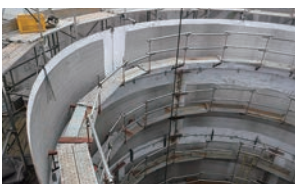
Technical Achievements and Case Studies

Integrated handling from design to installation and inspection for Class 2 pressure vessels as well



Class 2 pressure vessels are devices that require high technical expertise. The company undertakes contract manufacturing for various plant equipment from plant manufacturers. By managing the entire process, including design, manufacturing, on-site installation, and inspection, in-house, Sky Techno Engi ensures quality, schedule adherence, and safety.

Blow tanks with 9,000-mm diameters, 24,000-mm heights, and 150-t gross weights



Sky Techno Engi manufactures blow tanks for conveying powdered materials under pressure, with proven experience with tanks featuring around 9,000-mm diameters, 24,000-mm heights, and 150-t gross weights. Clad steel (SS + SUS 304) is used for the main body material, ensuring corrosion and wear resistance while keeping costs down as well. Specialized fabrication technologies enable support for plant equipment with highly demanding functional requirements.

Main Equipment and Machinery [Specification / Unit]

- Vertical hydraulic press: 250 t
- Shearing: 3m width × 13 t
- Bending machine
- Turning roll: 20 t
- Radial drilling machine
- 3D surface plate
- 30-t freeway

Company Information

Business: Fabrication, Steel Structure Construction, Machinery Installation, Piping, Civil Engineering, Scaffolding and Related Operations
 Location: 1-6-57 Kuroshima, Niihama, Ehime Prefecture, 792-0892, Japan
 Established: July 2003 Capital: 20 million yen Employees: 35
 Representative: President Junichi Kawamata Tel: +81-897-45-1455
 Offices: Niihama Metropolitan Area Contact: Mikako Yamaoka
 URL: <https://sky-techno-engi.jp/>